

GAPDH Monoclonal Antibody

Catalog No. B-IO-10030 **Reactivity** H,M,R,Mk,C,Dg,Hm,Pg,Rb,Sh,Insect,Yeast

Storage Store at -20°C. Avoid freeze /thaw cycles.

Applications WB,IHC-p,IF **Host** Mouse

Note: Centrifuge before opening to ensure complete recovery of vial contents.

Images/Immunogen Information

Immunogen Synthetic Peptide

Swissprot P04406

Synonyms GAPDH,GAPD,CDABP0047,OK/SW cl.12,Glyceraldehyde-3-phosphate dehydrogenase,GAPDH,Peptidyl-cysteine S nitrosylase GAPDH

Product Information

Observed MW 37kDa

Buffer PBS with 0.02% sodium azide, 50% glycerol, pH7.4

Purify Protein A purification

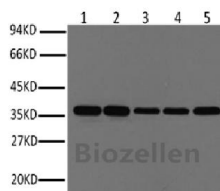
Clone No. Clone:9S5

Dilution WB 1:500-1:2000, IHC 1:100-1:300, IF 1:100-1:300

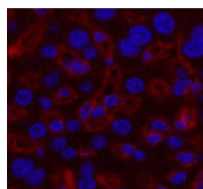
Background

Glyceraldehyde-3-phosphate dehydrogenase (GAPDH) catalyzes the phosphorylation of glyceraldehyde-3-phosphate during glycolysis. GAPDH participates in nuclear events including transcription, binding RNA, RNA transportation, DNA replication, DNA repair and apoptosis. Being stably and constitutively expressed at high levels in most tissues and cells, GAPDH is considered a housekeeping protein. It was widely used as a control for RT-PCR and also loading control in electrophoresis and Western blotting. GAPDH is normally expressed in cellular cytoplasm or membrane, but can occasionally translocate to the nucleus post modification such as S-nitrosylation.

Images



Western Blot analysis of HeLa, Rat brain, Rabbit muscle, Sheep muscle, Mouse brain using GAPDH Monoclonal Antibody at dilution of 1:1000.



Immunofluorescence analysis of Mouse liver tissue using GAPDH Monoclonal Antibody at dilution of 1:200



Immunohistochemistry of paraffin-embedded Human colon tissue using GAPDH Monoclonal Antibody at dilution of 1:200.